

## Early Medical Students' Research Impacts Public Health

Did you know that the influence of a 1927 graduate of the Stanford School of Medicine can still be seen in Yosemite National Park? Try the new History search on LaneConnex to learn about Donald Tresidder, class of 1927, later President of Stanford, and his thesis *"The National Parks, a Public Health Problem with Particular Reference to Yosemite National Park."*



*Mosquito Control—Spraying Oil on Stagnant Pools*

The thesis considers the history of Yosemite, the native Miwok, and the Yosemite Medical Service as well as the issues of water, sewage, garbage, mosquitoes and rodents, food supply and handling, disease, hygiene, and education.

Learn more about the theses of students at Stanford School of Medicine and the predecessor schools on the new History Portal.

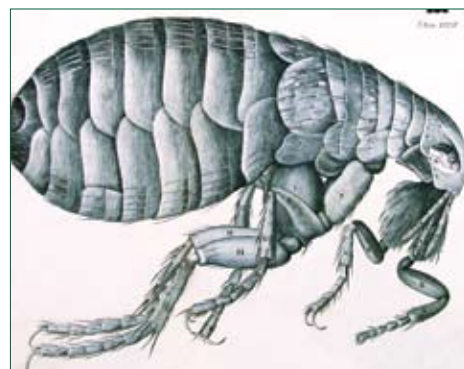
<http://lane.stanford.edu/portals/history/>

### Inside This Issue

EBP Fellows Flourish	2
Lane's New History Portal	2
Spring Ahead with More Backfiles Online!	2
Lane Donates Books to Zimbabwe	3
Bioresearch Informationist Program Turns One	3
New Course: Researcher's Toolkit	3
Tame Your Web-based Bibliographic Data with Webdash	4

## History Portal for Medicine

Discover the riches of Lane's historical collections which include over 6,000 rare books, hundreds of medical instruments, personal papers, manuscripts, and photographs. Whether you are getting started with an historical research project, looking for classical medical texts or images to provide context, or just want to find out more about the history of Stanford's School of Medicine and predecessor schools, the History Portal provides you with the place to start. You can both browse and search for specific medical texts and historical facts. Browse the "People" tab to locate biographical information and photos of School of Medicine alumni. Under the "Places" and "Topics" tabs, you can explore Lane's historical resources about the SUMC and special topics such as anatomy, medical education, surgery, and the basic sciences.



*Robert Hooke Micrographia 1665.*  
This was the first book devoted entirely to microscopic observations like that of the flea shown here.

For a focused search, put your keyword into the History search box at the top of the page to retrieve both local and international historical resources.

—continued on p.2

## Bioresearch Informationist Program Turns One

Lane's Bioresearch Informationist Program provides the services of Dr. Yannick Pouliot and others to help laboratory researchers better utilize biocomputational resources such as specialized databases and analytical software. The program promotes cross-disciplinary research by raising awareness of resources (including human expertise) across campus and beyond.

### KNOWN CHALLENGES

The Bioresearch Informationist Program addresses the familiar yet ironic problem of information excess, whereby the capacity of researchers to master the universe of biotools and data available to them is far outstripped by the size of that universe. An intelligent digital library, the goal of the Lane Library, can provide

“Lane's bioresearch tool has created a really useful portal to a variety of tools. I use it all the time, particularly in my patient-care activities. I am really pleased that PharmGKB can be added to this list of resources.

—Russ Biagio Altman, MD PhD, Professor of Bioengineering, Genetics and of Medicine (Medical Informatics, General Internal Medicine) and, by courtesy, of Computer Science.

the kind of optimal access, integration and dissemination of information needed by researchers and clinicians, which is why Lane today is less of a “library” and much more of “knowledge management center”.

—continued on p.3

## Spring Ahead with More Backfiles Online!

Complete eJournal backfiles for 1773 titles are now available! Recent additions are from HighWire Press, Lippincott Williams and Wilkins, Wiley Interscience, and more!

AIDS, 1988-

American Journal of Clinical Nutrition, 1952-

American Journal of Epidemiology, 1965-

American Journal of Hygiene, 1921-

American Journal of Otolaryngology, 1979-

American Journal of Public Health, 1912-

Biometrical Journal, 1959

Health Economics, 1992

International Ophthalmology Clinics, 1961-

Journal of Biochemistry, 1922-

Journal of General Virology, 1967-

Journal of Hypertension, 1983-

Journal of Immunology, 1916-

Journal of Nervous and Mental Disease, 1876-

Journal of Neuropathology and Experimental Neurology, 1942-

Journal of Nutrition, 1928-

Medical Care, 1963-

Medicine, 1922-

Otolaryngology & Neurology, 2001-

Pediatric Research, 1967-

Pharmacogenetics, 1991-

Plastic and Reconstructive Surgery, 1946-

Research in Nursing and Health, 1978-

Spine, 1976-

Statistics in Medicine, 1982-

## EBP Fellows Flourish



Donna Lashgari, CHT HTC OTR, Rehab Services Manager, and Marilyn Tinsley, Lane Library Liaison for Nursing and Rehabilitation services, explore PubMed at the Research Council Ice Cream Social on April 18, 2007.

Would you love to have time to research a question, evaluate the literature, and propose improved procedures that would benefit your colleagues and patients? This is what the Fellows of the SUH Research Council's Evidence-Based Practice program are doing. Each Fellow develops a question that impacts his or her clinical area and submits that question as a proposal to the Research Council. After the proposals are accepted, the Fellows begin a year of research and classes. Fellows receive paid release time to facilitate doing their research and

attending educational sessions. Resources and services provided by Lane Library are an important component of the research element. Each Fellow has come to Lane for a personal literature search consultation, working on their topics with Marilyn Tinsley, Lane's Nursing Liaison Librarian.

Together, researcher and librarian tackle the literature search, select search terms and articles, and adapt search strategies to improve and refine the results. This collaboration makes it much easier for both researcher and librarian to understand the question and find the best information available.

This year's topics include patient teaching in diabetic patients, improving oral care to help prevent pneumonia, preventing suicide after hospital discharge, patient care implications of tight glycemic control, exercise for bone marrow transplant patients, and monitoring body weight as an alert for ovarian hyperstimulation.

The Fellows present their results via talks and posters at events such as the Research Council Ice Cream Social.



*Dear fellow Fellows:  
Met with Marilyn Tinsley last week and she was of great assistance. She has experience that makes searching easy and interesting. She is creative and knows how to extrapolate. This all makes evidence-based literature searching a delightful experience and NOT tedious. Get ready to enjoy!*

—Marika O'Baire-Kark, RN, works on G2/H2, via email

## Lane's New History Portal



Stanford School of Medicine's Predecessor School, Cooper Medical College, 1882

**History is about storytelling. We seek to tell the stories of people, instruments, events, basically the who, what, how, where, and when of everything our collections record.**

The portal is a mix of static and dynamic content including

- General descriptions of our historical collections
- Dr. Wilson's e-book on the history of the School of Medicine and its predecessor schools
- Finding aids for archival records
- Spotlights on many of the treasures in the collections
- Links to outside resources on SUMC history, history of medicine, and external tools to aid historical research

The history portal is intended to

- Provide a searchable and browsable repository of Lane's historical collections, including descriptions of collections and digitized material
- Profile events, figures, and places of SUMC history
- Provide access to tools for historical research

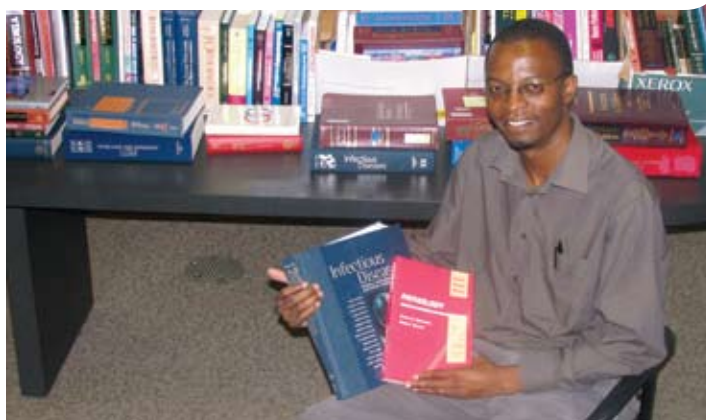
The powerful one-box search will lead you to books and other writings as well as profiles and images at the same time that it searches the major aggregators of history resources, including a historically-focused PubMed search.

## Lane Donates Books to Zimbabwe

Lane used its entryway plasma screen to promote the collection drive for medical textbooks for Zimbabwe and donated over 100 textbooks. Social science research assistant, Ralph Klumpp, working with Dr. David Katzenstein, coordinated the book drive to support the Biomedical Research and Training Institute (BRTI) in Harare, Zimbabwe.

The BRTI is an African-founded institute with a mission to become a center for excellence in health research and training that actively

supports scientists. The books will be sent to the BRTI which trains medical students, as well as other health professionals, from the University of Zimbabwe College of Health Sciences, also in Harare, Zimbabwe. The project is part of a grant obtained by BRTI's Peter R. Mason. The goal of the proposal is to strengthen the capacity of African research scientists to design, develop, and conduct effective, relevant and ethical research programs, focusing on HIV, TB and OI.



Reggie Mutetwa, a Senior Medical Laboratory Scientist for Biomedical Research and Training Institute (BRTI) in Harare, Zimbabwe, with Lane Library's donation of over 100 medical books.

## Bioresearch Informationist Program Turns One (cont.)

### TOWARD SOLUTIONS

In addition to extensive outreach activities, Dr. Pouliot and his colleagues at Lane have responded to the known challenge along three main axes:

- Enhancing the Library's Web presence: the Bioresearch Portal ranks as the 25th most visited LaneConnex page with 300-700 visits a day and a total of more than 5,000 page visits since inception in July 2006.
- Creating multiple courses oriented toward laboratory research: since May 2006, well over 200 researchers have attended Dr. Pouliot's eight newly-created classes, focused mostly on biocomputation.
- Securing and integrating content of specific relevance to bioresearchers: three new biodata databases have been added to Lane's collection of licensed content: Proteome, Protein Lounge, Human Genome Mutation Database.

### THE FUTURE

Going forward, we are developing novel software tools to address thorny problems facing bioresearchers, such as "how can I find biotools that are optimal for my research problem?" In the short term, we will be introducing an RSS feed entitled Tools-ForYou, a weekly introduction of biotools of likely relevance to researchers. Stay tuned!

## Live Webcast: "Researcher's Toolkit"

"Researcher's Toolkit" will provide a succinct overview of essential tools and resources for both the basic life scientist AND clinical researcher. The first hour will cover the Bioresearch metasearch engine, a unique tool that provides a rapid understanding of the total universe of information on a bioresearch topic.

Actual cases where the metasearch addressed researchers' questions will be used to demonstrate its applications, particularly in translational medicine. The second hour will deal with clinical resources, including: high-quality image repositories, medical meta-search engines, clinical calculators,

drug databanks, and more. Many of these tools are commercially licensed by Stanford on behalf of users and provide a significant competitive advantage over what is available in the public domain. Others have been developed and/or adapted by Lane's Knowledge Management Center.

**WHEN:**  
Thursday, June 21<sup>st</sup>,  
10:00 A.M.–Noon



### DON'T HAVE TIME TO COME TO LANE FOR A CLASS?

Several of our classes, PubMed, Researcher's Toolkit, and Finding Funding will be webcast in May and June.

### NEW WEBCAST FOR THE COURSE ARCHIVE

You can also check to see whether a webcast for a particular class was added to the course archive. Simply connect to the classes page (see below) and click on the Archives tab.

<http://lane.stanford.edu/classes/>

Lane Medical Library  
 Knowledge Management Center  
 300 Pasteur Drive, L109  
 Stanford, CA  
 94305-5123

650.723.6831  
<http://lane.stanford.edu>

## Tame Your Web-based Bibliographic Data with Webdash

Webdash is a personal web assistant designed specifically for biomedical research and collaboration. It lets you overlay your own annotations and organization on top of the general web. With Webdash, you can annotate and organize web pages and papers, send them to colleagues with the click of a button, discuss them in private groups, and export them to EndNote. Webdash lets you harvest article metadata from sites like PubMed, HighWire, and BioMed Central right from your browser. No need to laboriously export citations—Webdash can extract them for you as you do your research and it even lets you add your own subject tags and notes right



Look inside Webdash

alongside standard bibliographic data like MeSH headings. A collaborative complement to EndNote with thoughtfully implemented privacy and security

features, Webdash lets you tame your web data. Webdash runs as client-side JavaScript and works in any browser without any installation.

### WORKING ON A PAPER ON MORE THAN ONE COMPUTER?

No problem. Your data is always at your fingertips with Webdash.

### WANT TO SHARE YOUR NOTES WITH COLLEAGUES OR ANNOTATE AN ARTICLE FOR YOUR JOURNAL CLUB?

Webdash supports collaborative research without making the fruit of that collaboration publicly accessible. With Webdash, your data is private and secure by default. Sharing is simple but you control what and when you want to share.

Take control of what you know ... Webdash it! <http://lane.stanford.edu/secure/webdash.html>